

**Aim: Conversation**

**Objectives:** By the end of this session, the students should be able to:

1. Start a conversation
2. Sign for greetings
3. Ask a Deaf person for a contact

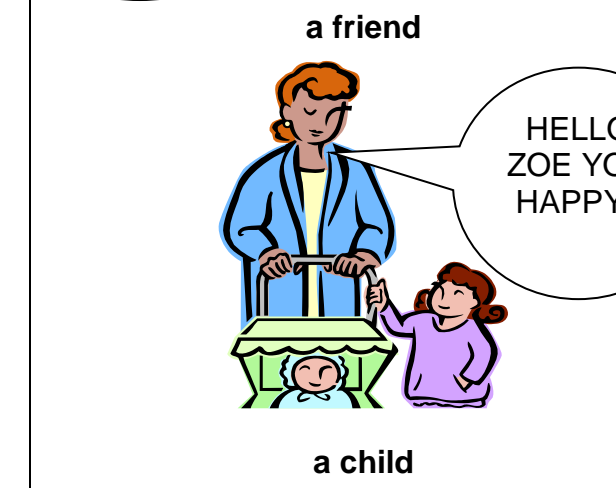
**Starting a conversation**

Show a range of ways to start a conversation, e.g. greeting, asking a question.



**Greetings**

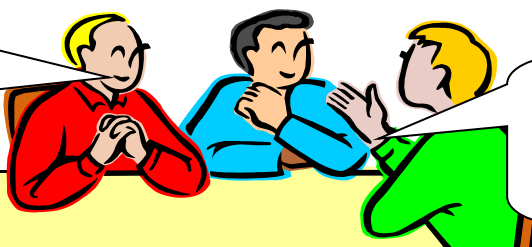
Show a range of ways of saying 'hello', e.g. to a friend, a stranger, someone in authority, a child

	
<b>a friend</b>	<b>a stranger</b>
	
<b>a child</b>	<b>Someone in authority</b>

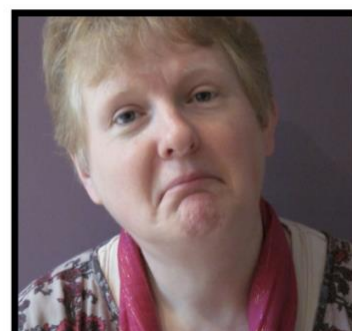
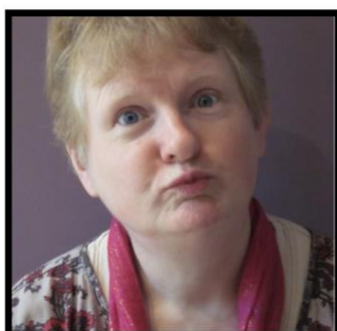
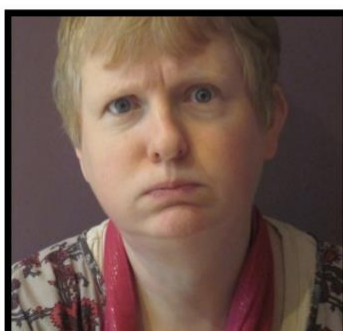
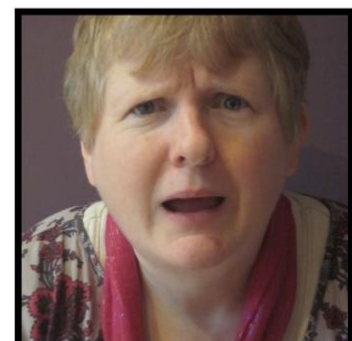
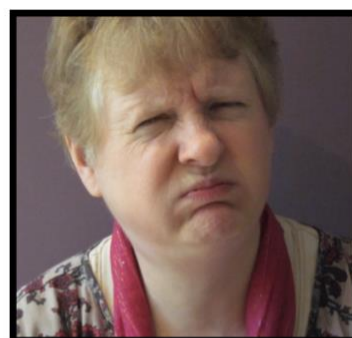
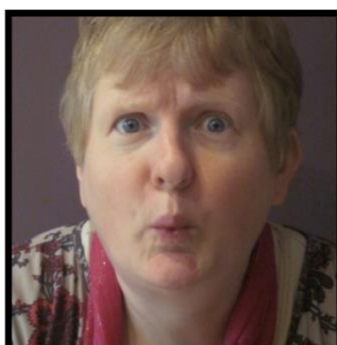
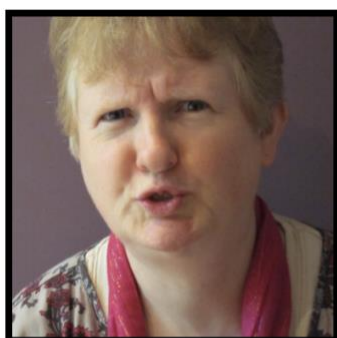
## Maintaining a conversation

Show that you are interested in what the other person is saying that you are paying attention and understand what they are saying.

**BOTH  
LEARNT  
BSL AT  
ENFIELD  
COLLEGE**



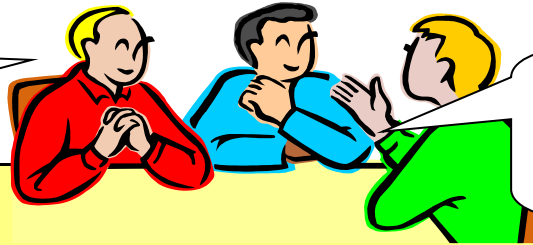
**REALLY**



## Asking some questions

Ask some open and closed questions, use WH questions and also use Rhetorical Questions

**LIVE  
WHERE?**

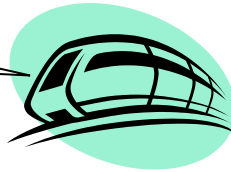


**LIVE WHERE?  
NEAR  
HARROW**

## Transport with Rhetorical Questions

Facial expressions change according to the type of questions asked. A rhetorical question does not require an answer and is asked only for effect. It is shown by raised eyebrows and head tilted back.

How did I  
arrive here?  
By train



Which  
number bus  
did I get?  
No. 23



Why did I  
use a taxi? I  
am disabled.



How did I  
travel to  
work? I ride a  
bike



How did I  
arrive here?  
By motorbike



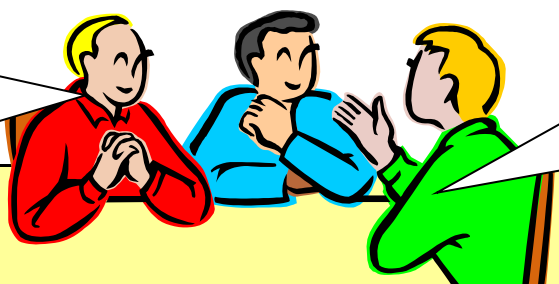


How did I go  
to a college?  
By car

### Requesting clarification

Interrupt or use other means when you don't understand what the other person is saying and you need repetition or clarification. Respond to requests for others to do the same.

**BSL TEACHER  
NAME LOUISE  
RICHARDS**

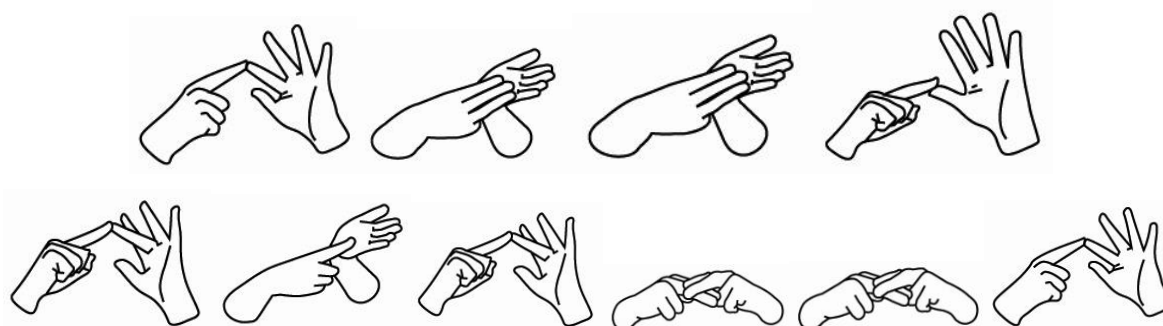


**SPELL AGAIN  
LOUISE  
SECOND  
NAME?**

### Fingerspelling names with second name

Please use the appropriate fingerspelling patterns to match the lip patterns by not mouthing the individual letter, e.g. L-O-U-I-S-E.

**My teacher is called:**



Louise Richardson

Mary Kidd

Julie Butcher

Ruth Williams

Shainal Vasant

Alan Murray

Peter Coulman

Olivia Nevile

Robert Brown

Emma Iliffe

Shilpa Shah

Lorraine Baker

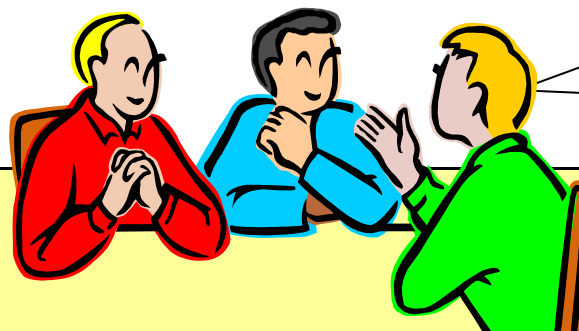
Rosemary Smith

John Elton

Julie Denmark

### **Finishing a conversation**

Demonstrate that you can finish a conversation using a range of polite conversations, appropriate for the people who you have been conversing with.



GREAT MEET  
SEE NEXT  
WEEK  
GOODNIGHT

### **How to contact a Deaf person?**

EMAIL ADDRESS  
PLEASE? THANKS



Email address



Textphone Number



Mobile SMS



Video Chat