



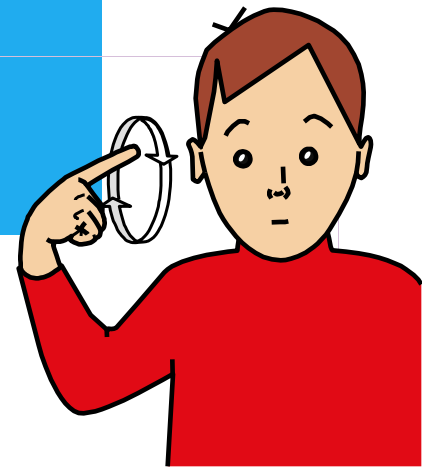
ASSOCIATION OF
BSL
TEACHERS &
ASSESSORS

Section 4: Transport

Transport

Learning Outcomes:

- Give information about mode of travel.
- Receive information about mode of travel.

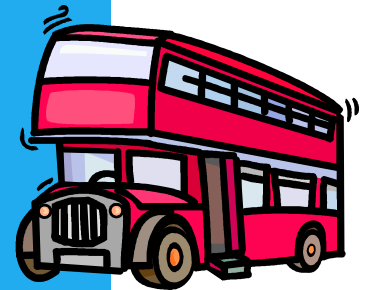
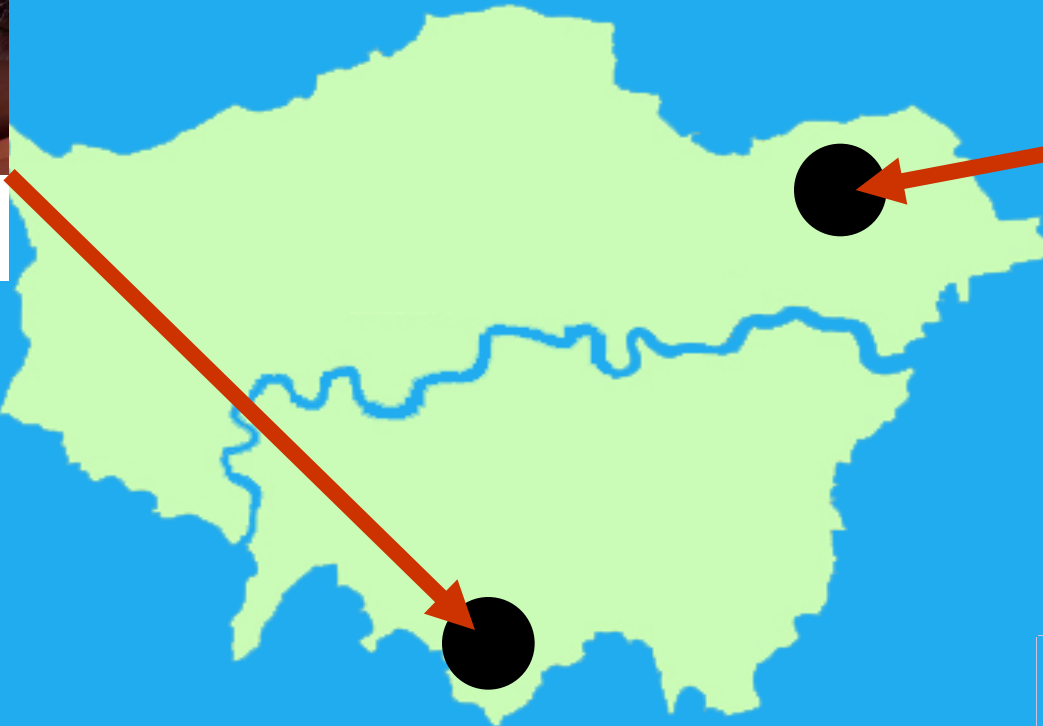


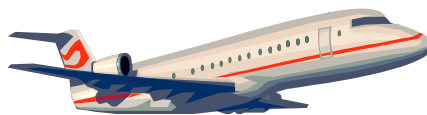


Eva

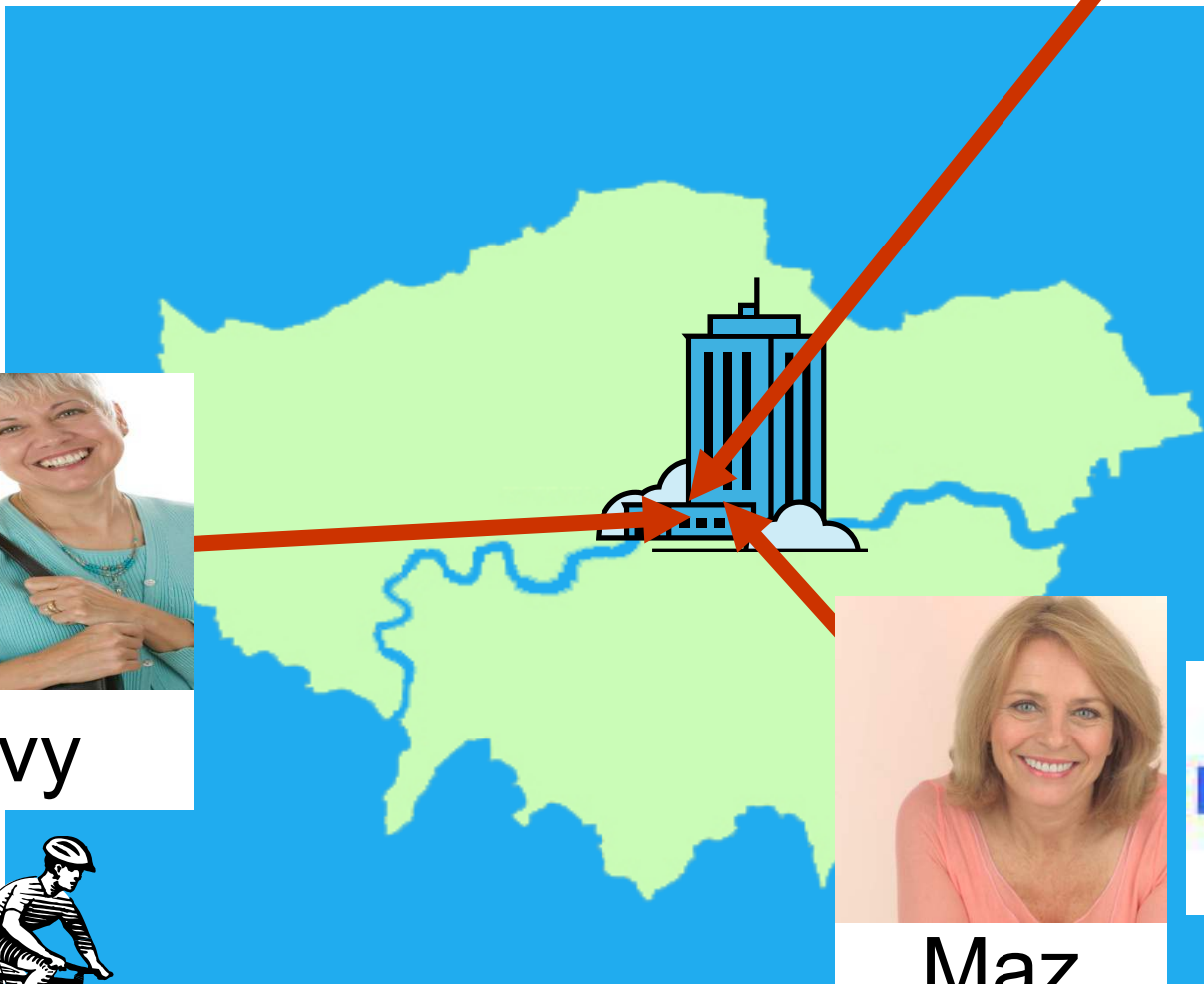


Ali





Ben



Ivy



Maz

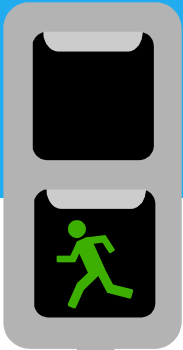


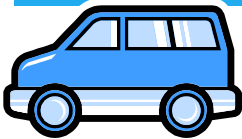
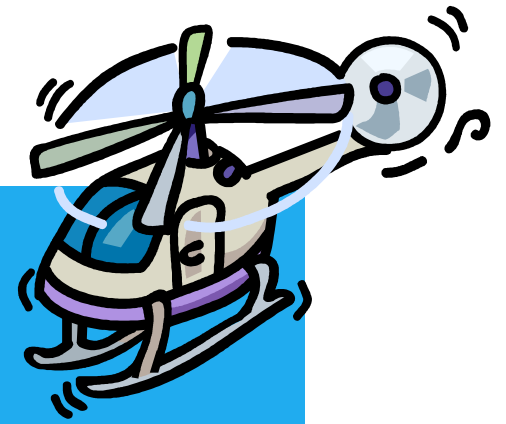


Raj



Sui





Describing mode of travel

- Asking for and giving information about travel, e.g.
- ARRIVE HOW?
- YOU WALK?
- BUS WHERE?
- ARRIVE TRAIN
- NEAR FAR?

Dialogue



- **Ask B for information on her/his transport**
- Give information. Ask A for information on her/his transport
- **Give information. Ask B how long there**
- Respond. Ask A how long there
- **Respond**